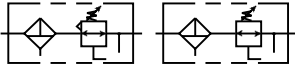
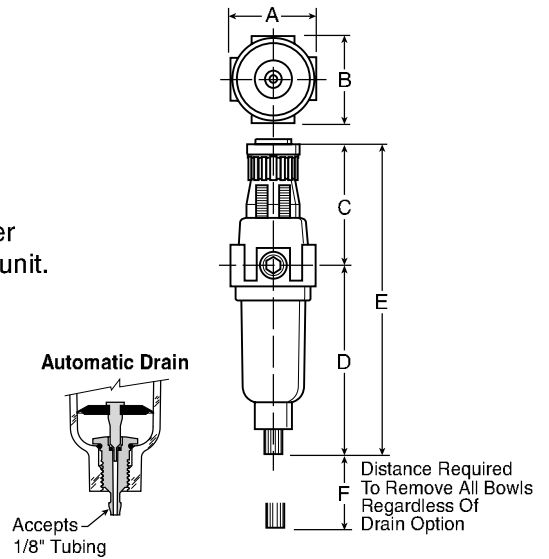


## 14E Filter / Regulator – Miniature



### Features

- Excellent water removal efficiency.
- Unbalanced poppet standard.
- Solid control piston for extended life.
- Space saving package offers both filter and regulator features in one integral unit.
- Non-rising adjustment knob.
- Two full flow 1/8" gauge ports.
- High Flow: 1/8" – 16 SCFM §  
 1/4" – 18 SCFM §



Port Size	NPT	
	Twist Drain	Automatic Pulse Drain
Poly Bowl ‡		
1/8"	<b>14E01B13F*</b>	<b>14E05B13F*</b>
1/4"	<b>14E11B13F*</b>	<b>14E15B13F*</b>
Metal Bowl		
1/8"	<b>14E03B13F*</b>	<b>14E07B13F*</b>
1/4"	<b>14E13B13F*</b>	<b>14E17B13F*</b>

14E Piggyback Dimensions		
<b>A</b> 1.62 (41)	<b>B</b> 1.58 (40)	<b>C</b> 2.42 (61)
<b>D</b> 3.79 (96)	<b>D†</b> 3.64 (92)	<b>E</b> 6.21 (158)
<b>E†</b> 6.06 (154)	<b>F</b> 1.60 (41)	

Inches (mm)  
 † With Auto Drain

Standard part numbers shown bold. For other models refer to ordering information below.

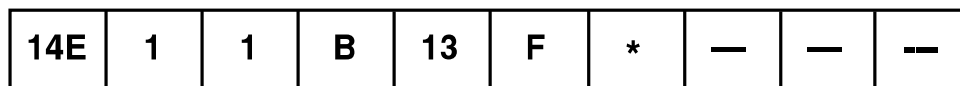
‡ For polycarbonate bowl see Caution on page 1.

§ SCFM = Standard cubic feet per minute at 100 PSIG inlet,  
 90 PSIG no flow secondary setting and 10 PSIG pressure drop.

NOTE: 1.218 Dia. (31mm) hole required for panel mounting.

### Ordering Information

NOTE: BOLD OPTIONS ARE STANDARD.



**Port Size**  
**0. 1/8 Inch**  
**1. 1/4 Inch**

**Elements**  
**A. 40 Micron**  
**B. 5 Micron**  
**Z. Adsorber**

**Relief**  
**F. Relieving**  
**G. Non-Relieving**

**Port Type**  
**Blank. NPT**  
 1. BSPP  
 2. BSPT

**Preset / Pressure Limited**  
**Blank. None**  
 XXX\* Preset Pressure  
 XXX\* Pressure Limited

**Bowl Options**  
**Polycarbonate Bowl**  
**1. Twist Drain**  
**5. Automatic Drain**  
**Metal Bowl**  
**3. Twist Drain**  
**7. Automatic Drain**

**Pressure Range**

Without Gauge	With Gauge
10. 30 PSIG	15. 30 PSIG
11. 60 PSIG	16. 60 PSIG
12. 15 PSIG	17. 15 PSIG
<b>13. 125 PSIG</b>	18. 125 PSIG

**Engineering Change Designator**  
 Will be entered at factory.

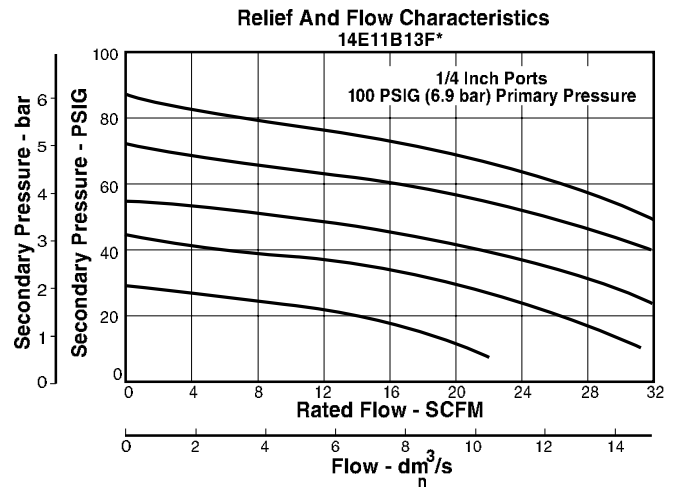
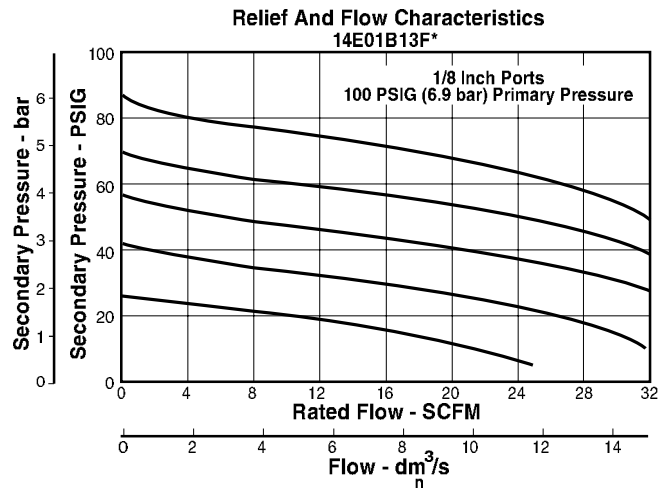
**Options**  
**Blank. No Options**  
 L.† Preset Non-Adjustable  
 P.† Preset Adjustable  
 S.† Pressure Limiter Max. Adjustable  
 T.† Pressure Limiter Max.

\* Available Preset / Pressure Limited Range, 10 to 90 PSIG in 5 PSIG increments. For higher pressures, contact factory.  
 (Example: 065 = 65 PSIG)

**Spring Type by Preset / Limited Pressure:**  
 For Preset / Limited Pressure 10 to 25 use 30 PSI Spring  
 For Preset / Limited Pressure 26 to 50 use 60 PSI Spring  
 For Preset / Limited Pressure 51 to 90 use 125 PSI Spring

† Inlet Pressure is 100 PSIG. For other pressures, contact factory.

Technical Information



CAUTION:

**REGULATOR PRESSURE ADJUSTMENT** – The working range of knob adjustment is designed to permit outlet pressures within their full range. Pressure adjustment beyond this range is also possible because the knob is not a limiting device. This is a common characteristic of most industrial regulators, and limiting devices may be obtained only by special design.

For best performance, regulated pressure should always be set by increasing the pressure up to the desired setting.

**⚠ WARNING**

**Product rupture can cause serious injury.  
Do not connect regulator to bottled gas.  
Do not exceed maximum primary pressure rating.**

14E Filter / Regulator Kits & Accessories

- Bowl Kits** –
  - Poly Bowl – Automatic Drain ..... PS408P
  - Twist Drain ..... PS404P
  - Metal Bowl – Automatic Drain ..... PS451P
  - Twist Drain ..... PS447BP
- Filter Element Kits** – 40 Micron ..... PS401P
- 5 Micron ..... PS403P
- Adsorber ..... PS452P
- Gauges** – 30 PSIG (0 to 2.1 bar) ..... P530156
- 60 PSIG (0 to 4.1 bar) ..... P530154
- 160 PSIG (0 to 11.0 bar) ..... P77413
- Mounting Bracket Kit** (Includes Panel Mount Nut) ..... PS417BP
- Panel Mount Nut** ..... P78652
- Poppet Kits** – Unbalanced ..... PS424BP
- Balanced ..... PS425BP
- Service Kits** – Non-Relieving ..... PS422P
- Relieving ..... PS423P
- Springs** – 1- 15 PSIG Range (Yellow) ..... P01176
- 1- 30 PSIG Range (Black) ..... P01175
- 1- 60 PSIG Range (White) ..... P01174
- 2- 125 PSIG Range (Gold) ..... P01173

Specifications

- Automatic Pulse Drain Tube Barb** ..... 1/8 Inch
- Bowl Capacity** ..... 1 Ounce
- Gauge Ports (2)** (Can be used for Full Flow) ..... 1/8 Inch
- Port Threads** ..... 1/8, 1/4 Inch

Pressure & Temperature Ratings –

- Polycarbonate Bowl
  - 0 to 150 PSIG (0 to 10.3 bar), 32°F to 125°F (0°C to 52°C)
- Metal Bowl
  - 0 to 250 PSIG (0 to 17.2 bar), 32°F to 175°F (0°C to 80°C)

Secondary Pressure Ranges –

- Standard Pressure ..... 2 to 125 PSIG (0 to 8.6 bar)
- Medium Pressure ..... 1 to 30 PSIG (0 to 2.1 bar)
- Medium Pressure ..... 1 to 60 PSIG (0 to 4.1 bar)
- Low Pressure ..... 1 to 15 PSIG (0 to 1 bar)

**Weight** ..... 0.4 lb. (0.18 kg)

Materials of Construction

- Adjusting Nut** ..... Brass
- Adjusting Stem & Spring** ..... Steel
- Body** ..... Zinc
- Bonnet, Knob, Seat, Piston, Holder & Deflector** ..... Plastic
- Bowls Available** – Transparent ..... Polycarbonate
- Metal (Without Sight Gauge) ..... Zinc
- Drains** – Manual – Twist Type
  - Body & Stem ..... Plastic
  - Seals ..... Nitrile
- Automatic – Pulse Type
  - Piston & Seals ..... Nitrile
  - Stem, Seat, Adaptor & Washers ..... Aluminum
- Filter Elements** – 5 Micron (Standard) ..... Plastic
- 40 Micron (Optional) ..... Plastic
- Adsorber (Optional) ..... Activated Charcoal
- Seals** ..... Nitrile